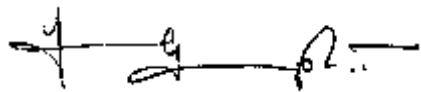




sourabh gupta - b.arch, aiia - director, principal architect, archohm consults

archohm's design philosophy propagates a 'mad and fun' out-of-the-box approach to spatiality, with play of light, volumes and materials.



sourabh gupta
director
principal architect







infrastructure

township

toll plaza

cultural

mixed use

Institutional

hospitality

corporate

residential

products

- b. architecture, school of architecture, cept, gujarat, india	(2000)
- urban design technical university, delft, the netherlands	(1999-2000)
- alternate technology and construction materials, auroville, india	
- earthquake resistant technologies, london	
<hr/>	
- director, archohm consults	(1999 - present)
- director, archohm middle east, uae	(2009 - present)
- partner, archohm holland, netherlands.	(2000 - present)
- director and design head, zolijns designs private limited	(2009 - present)
- director, ten on ten habitat private limited	(2005 - present)
<hr/>	
- mentor, design factory india	(2011 - present)
- entrepreneurship summit 2011, delhi technological university	(2011)
- architecture and design in india, iifd, delhi	(2005)
- visiting faculty, earthquake rehabilitation, harvard	(2004)
- visiting faculty, earthquake rehabilitation, london metropolitan university	(1999)
<hr/>	
- council of architects, india	
- indian institute of architects	
- india green building code	
- indian buildings congress	
- advisor, l&t idpl infrastructure projects	
- urban advisor and architect, delhi-gurgaon expressway, nhai	

special mention	young enthused architect award, dilli haat and shoolini library, a+d cera awards	india, 2014
special mention	the radiant cooling technology and the innovative approach for energy efficient design, dilli haat, janakpuri, emerson cup	india, 2014
winner	3rd annual igen design forum	india, 2014
winner	ndtv architecture and design awards for commercial architecture design of the year	india, 2014
winner	iiid anchor award for excellence in interior design - north east and central india	india, 2013-14
commendation	iiid anchor award for excellence in furniture design - north east and central india	india, 2013-14
winner	the indian building congress award for studio archohm	india, 2013-14
commendation	the indian building congress award for vadodara bharuch toll plaza	india, 2013-14
winner	spire world, world architecture community awards	spain, 2013-14
winner	young designer of the year award, edida india	india, 2013-14
winner	state commendation award, 22nd architect of the year awards	india, 2012-13
special mention	architecture + design & cera awards for institutional / office buildings and young enthused architect award	india, 2013
winner	iiid anchor award for excellence in interior design - north east and central india	india, 2013
winner	epc award for outstanding contribution in commercial projects	india, 2012
winner	meri dilli awards	india, 2011
winner	iia award 2012 for best urban infrastructure project	india, 2012
winner	innovation in design consultancy, knowledge resource development and welfare group, new delhi, india	india, 2012
commendation	asia pacific property awards, office architecture, kuala lumpur, malaysia	u.k., 2012
commendation	asia pacific property awards, office interiors, kuala lumpur, malaysia	u.k., 2012
winner	living etc, innovative use of existing material, delhi, india	india, 2012
winner	elle décor international design award, 'best product design', 'bathroom' category, mumbai, india	india, 2011
runners up	aces of space design awards, architects and interiors india, corporate interiors, mumbai, india	india, 2011
finalist	young creative entrepreneur award, british council, delhi, india	india, 2011
winner	star young entrepreneur award, 5th indira international innovation summit, pune, india	india, 2011

lighting symposium	2014	natural and artificial lighting at the national symposium on intelligent lighting in building, monuments and street lighting
fensterbau frontale india	2014	panel discussion - redefining lifestyle: energy efficient windows, doors and facades
the design village	2013	exhibition with the "architecture of consequence" exhibit by the nai, india international centre
the dutch path at the design village	2013	a collaborative project of archohm and the netherlands architecture institute
of infrastructure aesthetics	2012	international seminar on pre-engineered and quick launch bridges, indian institute of bridge engineers
international seminar, mumbai	2012	emerging trends in transportation structures
design x design	2012	delhi tax - social design responsibility by studio archohm
muscon	2012	the design village - a platform for
e 3	2007	greening the non built
philips international design workshop	2007	light and architecture
archotour 2006 - present	2006	10 days, 18 people, driving a 1000 kilometres for 100 design projects
london metropolitan university workshop	2006	street and streetscapes
gujarat workshop	2005	earthquake rehabilitation
archohm exhibition	2004	an exhibition inside an exhibit

domus	oct 2014	dilli haat
surface southeast asia	oct 2014	dilli haat
ace update	feb 2014	my dream project
insite	jan 2014	archotour
casaviva	jan 2014	architecture + design & cera awards
architecture + design	jan 2014	architecture + design & cera awards
architecture + design	jan 2014	architectural studio spaces
interiors and decor	dec 2013-Jan 2014	top architects- sourabh gupta
society interiors	jan 2014	anniversary issue- note by sourabh gupta on society interiors
design detail	nov 2013- jan 2014	designed for sports
estate world	jan 2014	infrastructure, education sector, opportunities ahead
builders' friend	dec 2013	vadodara- bharuch toll plaza
building giants	nov 2013	on the roads- vadodara-bharuch toll plaza
times of india	5th dec 2013	acetech- special invitees, saurabh gupta
lfj, mumbai	nov 2013	thoughts from afar
inside outside	nov 2013	gen next school and taurian world school
architecture + design	nov 2013	the young enthused architects awards
society interiors	oct 2013	archohm portfolio
buildotech	oct 2013	vestergaard frandsen
architecture + design	oct 2013	taurian world school
architecture + design	oct 2013	article on contemporary educational spaces
architecture update	oct 2013	ds constructions
infrastructure today	sep 2013	urban flyovers
traffic infratech	oct 2013	urban flyovers
better interiors	sep 2013	self-kitchen
design today	feb 2013	design focus
architecture + design (a+d)	feb, april 2013	(design village, signature residences), (dutch path)
pool magazine	jan, april 2013	putting the fun into architecture, dutch path
the journal of indian institute of architects	dec 2012, may 2013	urban infrastructure, archohm studio
architecture update	oct 2012, feb, july 2013	detailing toll plaza, dilli haat, self kitchen and archohm studio

publication

issue

title

builder's friend	feb, july 2013	taurian world school, gennext school
built expressions	sep 2012, june 2013	cover feature: architectural fineness to contemporary tolls, precast concrete
home review	mar 2011, feb 2013	elegance in wood, dramatic construction
inside outside	mar 2011, august 2013	play of volumes, nns media office
elle décor	dec 2012	decor people, in the studio of sourabh gupta
design boom	oct 2012	archohm: vadodara bharuch toll plaza
objekt (netherlands)	sep 2012	villa agra by archohm
epc world	dec 2012	epc world archohm consult for outstanding contribution in commercial projects
architecture record (usa)	aug 2012	residential showcase
india art and design	aug 2012	high on style
floornature (italy)	jul 2012	villa agra
50 beautiful houses in india, vol – 2, peshawri house	apr 2012	sourabh gupta
world buildings directory	nov 2012	project in detail studio archohm
eco-construction india	nov 2012	archohm wins the iia award 2012 for the best urban infrastructure project
ideal home	mar 2011	palatial mansion
the design source	feb - mar 2011	a fabulous facade
+91 residences more contemporary indian houses, incite	mar 2011	wood lines
society interiors, store profile	sep 2010	modishly chic!
corriere della sera (italy)	apr 2010	the buyer. the trend
hindustan	feb 2010	taurian world school
the telegraph	nov 2009, nov 2010	hi-street mall, a new mall on the block at ranchi
the indian express newslite	April 2007, mar 2009	that's the way to build the walkway, how to redesign delhi's ugly ducklings

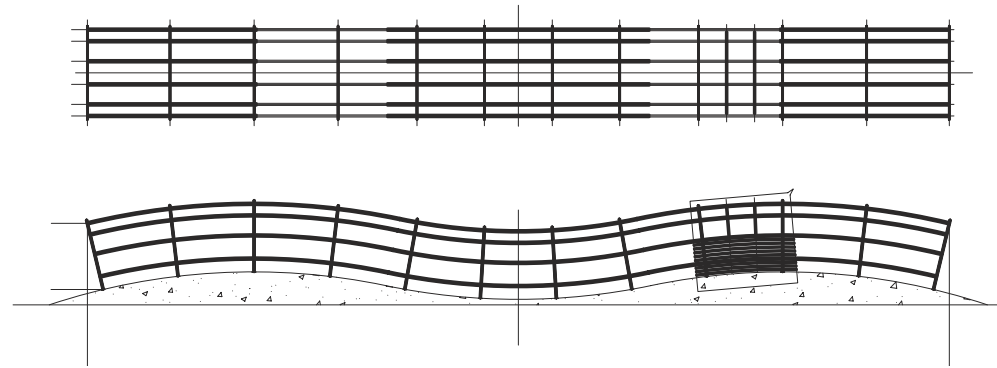
publication

issue

title

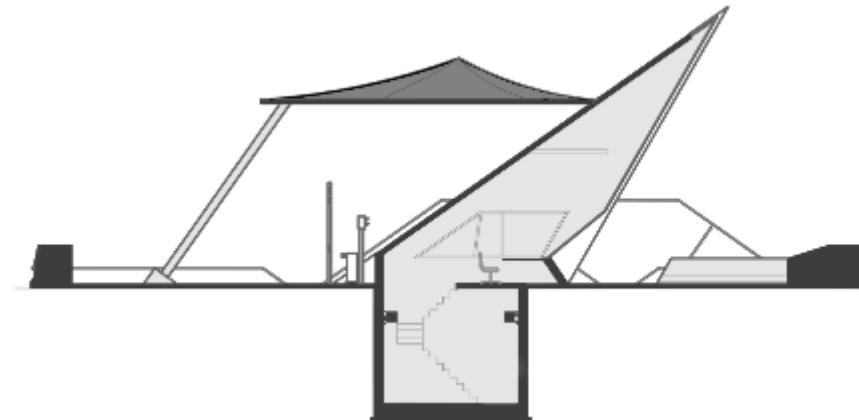
infrastructure

bombay-worli sea link (reliance infra)
delhi approaches to the wazirabad signature bridge (dttdc)
delhi gurgaon expressway (dsc limited)
delhi ring road (pwd)
ghazipur intersection (pwd)
moolchand vehicular and pedestrian underpass (dttdc)
mukerba chowk intersection (pwd)
panipat elevated corridor project (l&t)
prem bari underpass (dttdc)
madhuban chowk vehicular and pedestrian underpass (dttdc)
kolahpur ring road (irb)
ring road bypass (pwd delhi)
azadpur mandi intersection (pwd delhi)
bund road intersection (pwd delhi)
rotary and underpass near delhi airport (pwd delhi)



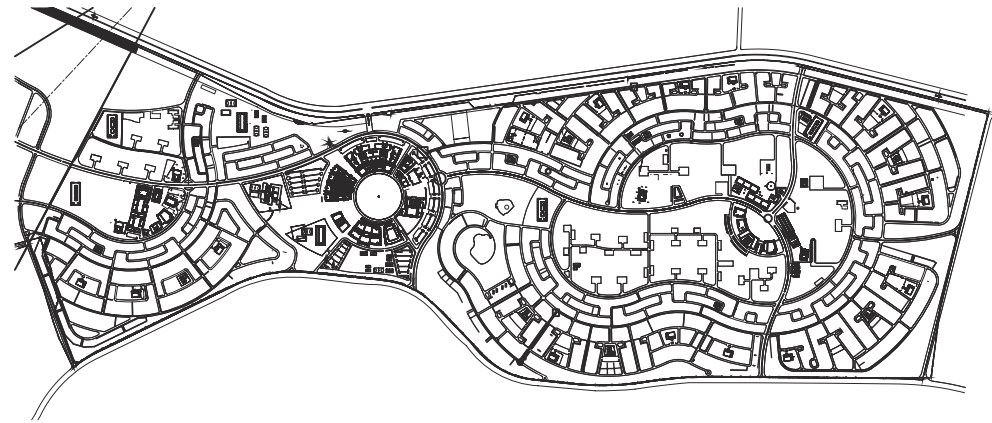
toll plaza

delhi gurgaon expressway nh-8 gurgaon haryana (jaypee dsc ventures)
delhi noida toll plaza, noida, up (ntbcl)
gsrdc toll plazas (l&t limited)
hungund hospet expressway, (gmr and oriental structural engineers)
hyderabad vijaywada expressway, city (gmr infrastructure and punj lloyd)
kmp expressway (dsc limited)
panipat elevated corridor project (l&t limited)
pink city expressway on nh-8 (eta)
vadodara-bharuch, gujarat (l&t limited)
yamuna expressway (jaiprakash industries)
panipat-jullundur toll plazas on nh -1 (isolux corsan)
kurali-kiratpur toll plaza (c&c-bscpl)
armur-khadtal-ap 8 (hcc)
ap6, andhra pradesh (soma)
jadcherla-kotakatta-nh-7 ap (l&t limited)
kondhali-talegaon section nh- 6-mp (oriental structural engineers)
raipur durg expressway (ds constructions limited)
krishnagiri-thopurghat-tn (l&t limited)
agra-bharatpur-nh-11 up-rajasthan (leighton india)
indore-khalghat-nh-3, mp (leighton india)



township

lucknow castle, lucknow
industrial estate, senegal
awadh vihar योजना, lucknow
chak ganjeria, uttar pradesh
belair housing complex, ranchi
gem school complex, ranchi
impact garden, amritsar
jaypee indus city housing
kufra housing, libya
sebha township, libya
taurian housing, ranchi
triveni towers, faridabad
triveni heights, ghaziabad



cultural

bihar museum, patna
dilli haat, new delhi
jpn international centre, lucknow
sirte mosque, libya
penta temple, anoopshahar
orthodox church centre, delhi
silver oaks educational complex, dasna



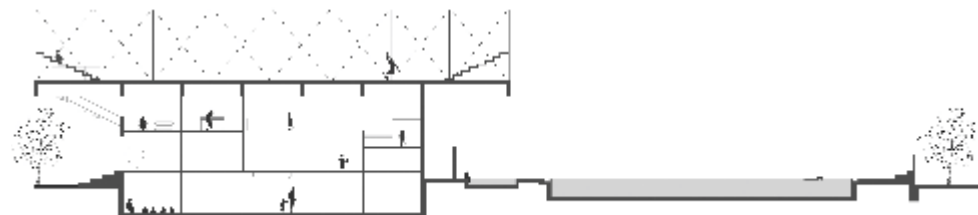
mixed use

archohm studio, noida (archohm)
ebony gautier, noida
intex corporate, delhi (intex technologies)
jd corporate, ranchi (jd group)
jd high street mall, ranchi (jd group)
oyia business park, libya
ebony gautier - noida
dilli haat shops
cotstyle garments show room - new delhi
luz light studio - new delhi
rr trends showroom
zuri by mk
d. s. retail store - lucknow
zolijs - nizamuddin
zolijs - pinnacle, gurgaon
zolijs - select city walk - mall, new delhi
taj palace - new delhi



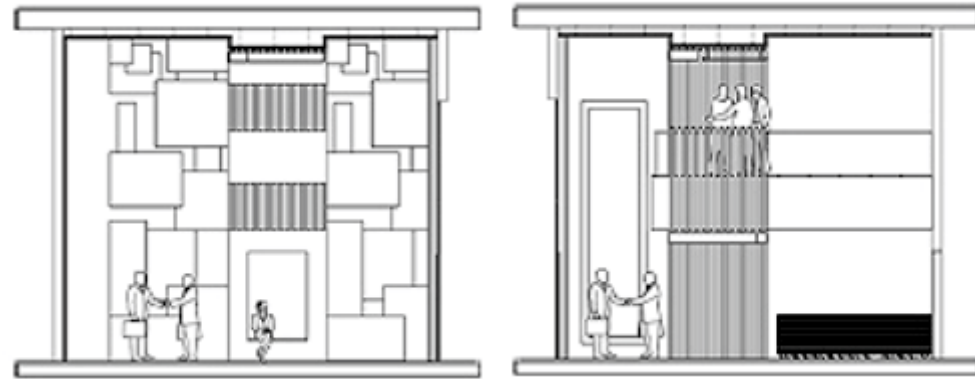
institutional

dps, gurgaon
cambridge school, delhi
cape cod veterinary services, usa
cerita university, chandigarh
first steps school, chandigarh
gen next school, noida
new england wildlife centre, usa
school of telecom and management, iit delhi
shoolini university, solan
sirte mosque and centre for learning, sirte
siver oaks woman's college, dasna
sunbeam university, varanasi
taurian world school, ranchi
varanasi dy patil college, pune
dy patil college - pune
cambridge school - indirapuram
school at kufra township - libya
school at sebha township - libya



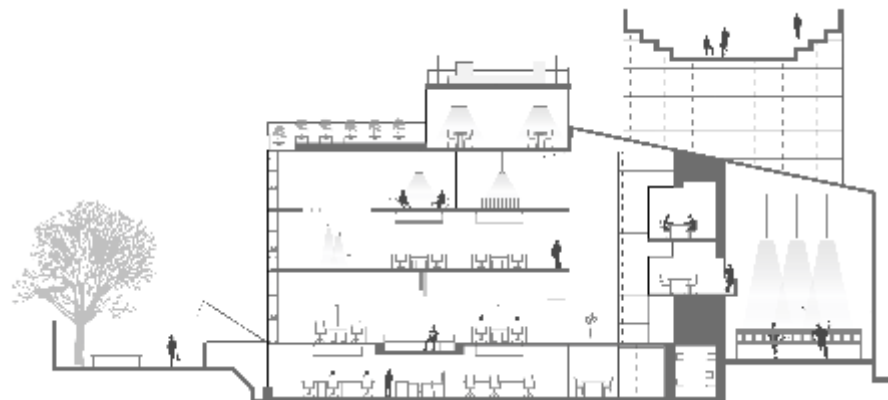
hospitality

budget hotel, delhi tourism
crown bansko, bulgarian ski resort
desert café, new delhi
discovery bay resort, hong kong
grand bansko - bulgarian ski resort of bansko
holiday inn, hong kong
neemrana hotel, ncr
private boutique hotel, bank of tokyo, new delhi
private boutique hotel, jor bagh, new delhi
rajasthan sheringtons, london
shangri la - ninbao, china
neemrana hotels, resorts, forts, places - rajasthan
sheringtons - london



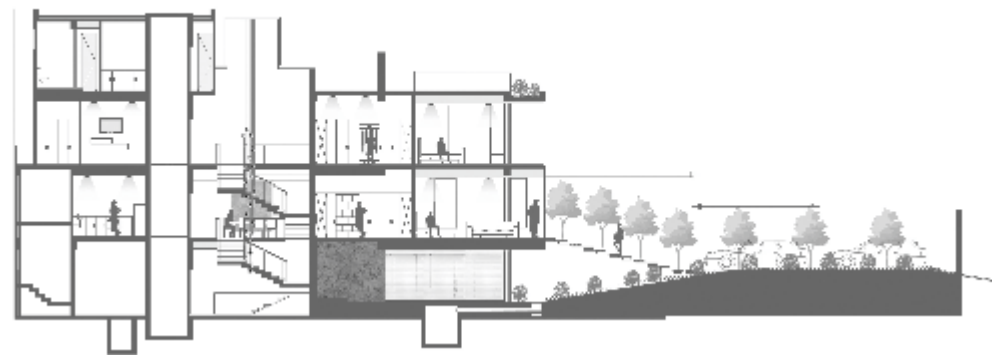
corporate

arcelor mittal, ranchi
archohm design studio, noida
asia limited corporate office of vestergaard frandsen asia ltd, new delhi
corporate office of vestergaard frandsen, new delhi
d.s.corporate office, south extension, new delhi
l & t corporate office, dwarka, new delhi
india limited corporate office of vestergaard frandsen new delhi
marketing and sales of d.s.corporate office, gurgaon
office for mitsubishi corporation gopaldas bhawan, new delhi
sare office of m/s sumitomo corporation, new delhi
coral drugs
sumitomo corporation
sibal office, new delhi
meri dilli media office, new delhi
three elements office, new delhi



residential

villa westend, delhi
dawat residence, agra
villa agra, agra
kant house, new delhi
nirvana residence, gurgaon
sarawgi house, ranchi
katyal residence, faridabad
maheswari residence, noida
peshawari residence, noida
residence at nizamuddin for mr. taneja
residence for mr. dawar - agra
residence for mr. peshawari - noida
residence for mr. maheswari - noida
residence for mr. jain - gurgaon
residence for mr. ahlawat - noida
residence for mr. kant - westend
residence for mr. alagh - westend
residence at ghaziabad for mr. trilochan
residence at ghaziabad for dr. agarwal
residence for ms. singhal - new delhi
residence for mr. katyal - faridabad
residence for mr. sarawgi - ranchi
residence for mr. khemka, lucknow



dilli haat, mayur vihar	2013	the design of dilli haat mayur vihar is centered around a green organic scheme. being aligned to an existing metro line, it speaks of landscaped green architecture that complements the proximity of the infrastructure development nearby. programmatically rich, this haat has provisions for dormitories for artisans, craft courts, food court, guest houses and indoor-outdoor banquets.
coffee homes	2013	coffee homes create an environment that connects the functions from one level to another without distributing identities a space with an overwhelming volume, a forum with a strong character, an inviting amphitheater, a multipurpose hall, a café zone, a library, and an internet dock.
spiretech	2011	a high profile global design competition in india with a mix land-use brief at a site in greater noida. the project was a take on indian urbanity and a direction to contemporary indian architecture. 'paan' as an indian flavour was interpreted in experience and as an organiser of space to make a green sustainable environment around a business park.
geeta colony	2009	after dlehi haat janakpuri, this was a dilli haat in east delhi that was centred around a spa, an ayurvedic treatment centre. a central court of existing trees organised the shops and the entire experience was a mosaic (literal and metaphorical) of experiences of an indian bazaar.
dilli haat, janakpuri, new delhi	2007	haat beat. a musical theme superimposed on the regular haat program lent a fresh flavour to the program and injected a new life in terms of foot falls. a prime tourism destination for fast growing west delhi.
mukerba chowk intersection	2006	a large urban knot woven around a clover leaf junction. this project brought together all faculties of urban design together. comprehensive design of lighting, landscape, street furniture and a four level transport hub in the centre brought the complex scheme together.
signature bridge approaches, wazirabad	2006	a large and complex solution to road networks. the first project to take the architectural input on all structures to give the project an international scheme. level of detail in structural aesthetics was the challenge.
prem bari underpass	2005	an urban insert to facelift the city infrastructure. membrane structures and innovative landscape design brought in a new perspective to flyovers.
moolchand underpass	2005	a high visibility urban insert . a new concept of pedestrian bridges and underpasses was developed to give the city a new landmark.
corporate office, dttdc	2004	a challenging design brief to superimpose values of delhi tourism and transportation. window to delhi as it would also attract regular visitors.
delhi gurgaon expressway	2004	the competition entry took tollways into the next generation of design. a signature plaza, an urban scheme for the 30 km stretch.
delhi noida toll bridge, dnd flyway	1999	a benchmark to the modern day infrastructure development. invited by the south african operators to build a facility to set new standards.
mitsubishi guest house, bank of tokyo, new delhi	1999	invited by mitsui constructions for the competition project in delhi. essence in design was to merge the japanese requirements in the indian built environment. financially, aesthetically and functionally.

competition name

year

competition description

"The working experience has always been good with Sourabh; I think he has undergone commendable growth in the ten years that I have known him. The designs his team provides are functional, efficient and aesthetic. His ability to think out of the box puts him in a class all by himself.

The vision of the Delhi Gurgaon project design was to make a 'wow' statement and I firmly think this was achieved in the design of the igi and the border plazas. Sourabh provides a unique and refreshing design concept.

The journey of the project was long and hard. Lots of meeting took place to achieve the desired effects, materials being one critical component of the implementation, quality or workmanship also being a factor that could have been improved.

My good wishes are with him to continue to be dynamic and creative."



Allan Le Roux
Chief Operations Officer - Tolling
DS Constructions Ltd.

"They say dreams are not the ones which you see while asleep, but they the ones which don't let you sleep.

Quite similar was my situation when I was dreaming about building a world class school in Ranchi. It was not difficult to meet architects who had the experience of building schools. But it was difficult to meet someone who could fit into our vision and 'who had not designed a school earlier'. It was a pinch more difficult to find that someone, on a flight.

This is how my association with sourabh started, purely 'air bound', which also meant, building our school in the air, and then pinning it down to our beautiful 42 acre campus.

It has been a happy journey for me to associate with him professionally and also to find a friend in Sourabh. In my personal view, I have no doubt in my mind that Sourabh is a name to reckon with in the field of architecture.

Sourabh has very rightly invested in people; his team is happy, motivated, charged and well lead.

With my sincere best wishes, I offer my prayer and the best of luck to his team to realize their dreams."



Amith Bajla
Chirman
Taurian World School, Ranchi

"I have known Sourabh for about 3 years now and i like the quality of his work.

Intex planned to build its corporate office in Noida, which would be bright and spacious, unconventional in its design, functional and cost-effective in its layout, with several meeting rooms for visitors and internal use, training rooms with audio-visual facilities, a canteen, gym and some play area for employees. All was going well till the economy took a turn for the worse in 2009 and the project had to be suspended.

Under Sourabh's guidance Archohm can achieve international recognition if it continues with its policy of high standards of design and cost effective execution."

"I have been a witness to the journey right from its embryonic stage, and remember the day when Sourabh had shared with me the name, Archohm, he had thought of for his venture. From then to now, in the last decade, India has seen people come up with business plans driven on factors such as the boom stage of the economy, availability of funding, timing the market, access to the right technology etc. But the vision of Archohm was unmindful of such external dependencies and it zeroed-in, laser like, on the passion for creation, travel and people to serve as its fuel for growth. While the location and size of the offices of Archohm, and the people inhabiting those offices, have grown by leaps and bounds, this fuel has remained sacrosanct, intact, and undiluted - and that may very well have been the biggest achievement of Archohm.

A decade ago, a dream named Archohm was born with a vision to match its ambition and it started its romance with designs. Since then, with successful completion of small and big projects in India and abroad, it has bloomed into an ever-lasting marriage of appealing form with desired function. It has come a long way from being a dream to designing dreams for others."



Narinder Bansal
CMD
Intex Technologies



Nishant Pandey
Senior Vice President / Head of Product Management
Naukri.com

"My association with Sourabh began when Archohm had just established itself, and was finding its path and identity, in times of tremendous flux in the industry. Little did i realize that the square shaped visiting card with Archohm written diagonally across was already defining both the nature and the trajectory of growth the organization has subsequently gone through.

I find Sourabh and his team oozing with energy, courage and passion, and that has reflected in the works that we have implemented together with Archohm.

I will feel proud if people would look at physical structures and say, oh i know, this is an Archohm design."

"It seems eons ago and it rekindles fond memories of a carefree student life. By the third year (1995) we had formed a strong bond amongst a small group of classmates, spending days and nights together enjoying the hardworking present and dreaming a bright future. Memories of the student days are innumerable but i would like to recount here a collection of events that best exemplifies the personality of sourabh. Sourabh was the ever proactive student and was instrumental in conducting the zonasa event successfully at the campus; an event that hasn't been conducted at cept ever since! He would simultaneously be the first to jump at an opportunity to travel. It is amusing to recall the days we spent traversing Europe, sleeping in tents and living off plain bread and rice. Not once do I recollect the merest hint of his dissatisfaction at our state of affairs. I am always amazed by the zeal and enthusiasm that he infuses in all the projects that he undertakes. I wholeheartedly wish him and his team a bright and eventful journey ahead.

I hope that the organization grows both in number and in its vision of socially responsive and responsible architecture."



Manu Gupta
Director
SEEDS india , a non-profit organization



Vishwanath Kashikar
Lecturer
CEPT, Ahmadabad

"My association with Archohm is almost a decade old now and there are many a memories to cherish, of times which were difficult, challenging, creative, argumentative, exciting, enthralling and the list goes on.

DND flyway was the first toll road project of repute in India, which changed the way people looked at toll plaza and tolling, including yours truly. That is where Sourabh and I started our journey in our endeavour to create some truly different toll plazas in the country, Archohm with a motive to create a niche in the fast unfolding opportunity whereas I had decided to pursue a career in operations & maintenance for the balance years of my professional career.

Youth brings in vibrancy, colour, passion, drive, innovation, modernity, futuristic approach and above all enthusiasm to do something different, while keeping the functionality, purpose and cost and time as the nucleus for any design. Sourabh and his team are truly a young brigade in a hurry to change the world.

"While we are halfway through the detail design phase of a project, it is already dated, as so many newer ideas would emerge while designing that if we keep improving it, we will never be able to finish it" said Sourabh during one conversation on a flight from Hongkong. This signifies Archohm's ongoing creativity and burning desire to deliver the best to its client.

The most striking feature of working with Archohm is that they step into the client's shoes to think and feel like him to succeed in delivering what a client actually needs. There are hardly any gaps between client aspirations and delivery. and when it comes to toll plazas, they only need to be given three parameters viz...traffic, available land and budget. Give them a couple of weeks and sure, a design option to exceed your expectations is guaranteed. There have been times when Archohm has actually helped improve operational efficiencies as well with their think tank working overtime to look beyond the obvious.

At Larsen and Toubro Limited, toll plazas and Archohm are inseparable. All our toll plazas after 2005 have been designed by Archohm be it Panipat, Dharmapuri, Jadcherla, Palanpur, Swaroopganj, Vadodara etc. and there are a lot more in the pipeline in the near future."



Manoj Dave
Head, Operations and Maintenance (Roads)
L&T Limited

